



Stoneacre
Properties



Cardwell Road, Leeds, LS14 1FL

£350,000

This stunning property located on Cardwell Road boasts four bedrooms, including a luxurious ensuite for added convenience and comfort. Situated in a popular area, this property offers a perfect blend of style and functionality. The spacious kitchen/diner is ideal for hosting gatherings with family and friends, while the utility room provides practicality for everyday living. Additionally, the guest WC adds a touch of convenience for guests. Whether you're looking for a family home or a place to entertain, this property offers the perfect setting for both. Don't miss the opportunity to make this house your home.

Entrance Hall



Door to front. Staircase leading to first floor. Central heating radiator. Storage cupboard.

Lounge



Two French doors. Double glazed window. Central heating radiator.

Kitchen/Diner



Fitted with a large range of wall and base units with work surfaces over incorporating a sink and drainer unit. Electric oven and gas hob with cooker hood over. Integrated fridge/freezer. Three double glazed windows. Central heating radiator.

Utility

Plumbing for automatic washing machine. External door.

Guest WC

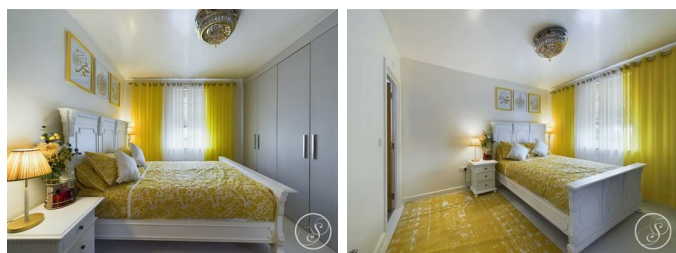


Fitted with a wash hand basin and wc. In addition there is a central heating radiator.

First Floor Landing

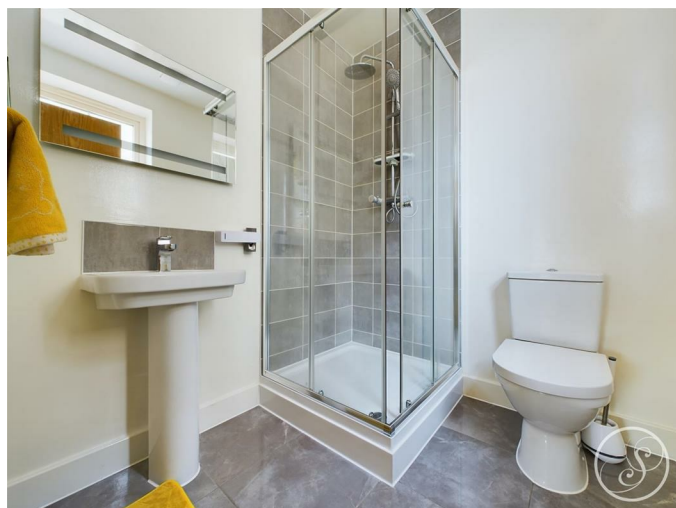
Central heating radiator. Built in storage cupboard.

Master Bedroom



Double glazed window. Central heating radiator. Fitted wardrobes.

Ensuite



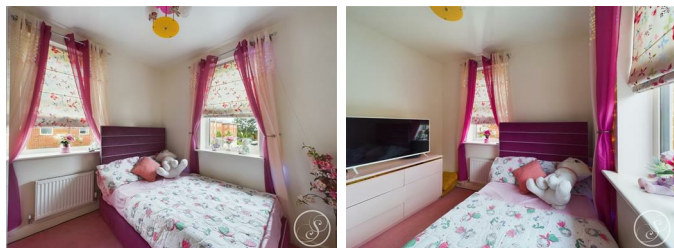
Fitted with a shower, wash hand basin and wc. In addition there is a double glazed window and a central heating radiator.

Bedroom Two



Double glazed window. Central heating radiator. Fitted wardrobes.

Bedroom Three



Two double glazed windows. Central heating radiator.

Bedroom Four



two double glazed windows. Central heating radiator. Fitted wardrobes.

Bathroom



Fitted with a bath with shower over, wash hand basin and wc. In addition there is a double glazed window, central heating radiator and tiling.

External

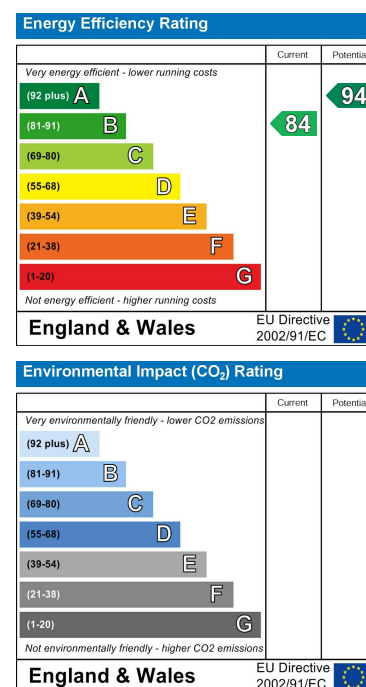
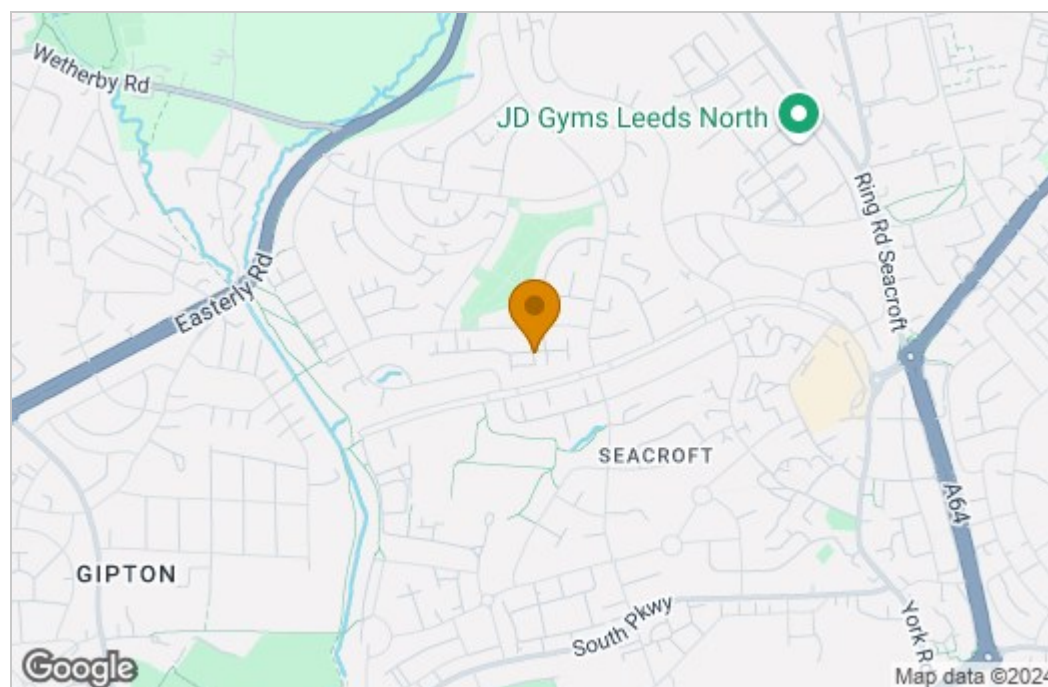


Garden that is mainly laid to lawn with a paved patio area.

Floor Plan



Area Map



These particulars, whilst believed to be accurate are set out as a general outline only for guidance and do not constitute any part of an offer or contract. Intending purchasers should not rely on them as statements of representation of fact, but must satisfy themselves by inspection or otherwise as to their accuracy. No person in this firm's employment has the authority to make or give any representation or warranty in respect of the property.

1 Colton Road, Leeds, West Yorkshire, LS15 9AA
Tel: 0113 260 9111 Email:
east@stoneacreproperties.co.uk <https://www.stoneacreproperties.co.uk>

Want to view properties first before they come on the market? Follow our Instagram @stoneacreproperties.

